

Creating A Virtual Machine

Learning Objective:

1. Understand the basics of virtual computing environment and virtual machine
2. Be familiar to VMWare Tools
3. Be familiar to virtual machine creation

Running Environment:

1. Windows OS

Material/Tools:

1. The Kali ISO File
2. VMWare Workstation or VMWare Player

Video Lecture:

1. Virtual machine creation

Lab Assessment:

1. Windows OS

Lab Instructions

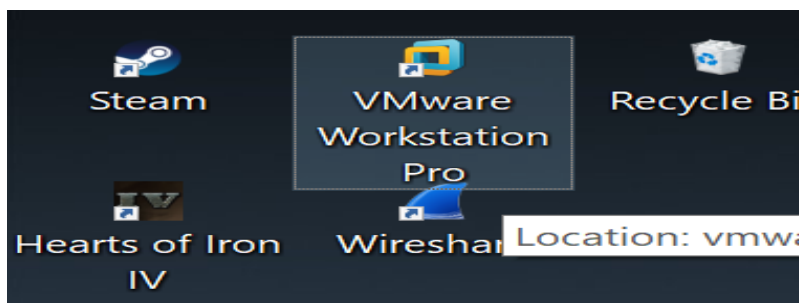
STEP 1:

Locate the VM image file, i.e., the .iso file.

#	Name	Size	Done	Status
*	↑ kali-linux-2018-4-amd64-iso	2.92 GiB	<div style="width: 100%;"></div>	Seeding

STEP 2:

Launch your VMware Workstation from your Windows PC startup Menu or Desktop Shortcut icon, by double click on the VMWare workstation icon.



Note: The following instructions is not needed for Virtual machine creation, only used for reference on how to configure local network settings (on Windows 10).

Make sure your host machine is connected to a private network (a campus or simple home network) via NAT router enabling easy inter network communication.

Press Window Key + I on your windows machine to access your windows setting page.



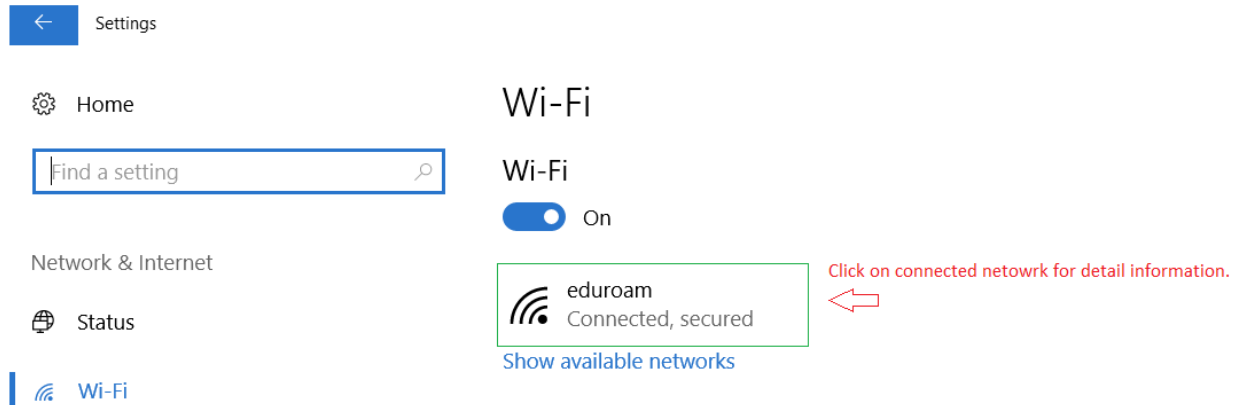
Select Network and Internet setting option from your windows setting to select available network option on your device.

The following steps are shown in the screenshots:

- Open Windows Settings and select **Network & Internet**.
- In the **Network & Internet** settings, turn the **Wi-Fi** toggle **On**.
- Click on **Show available networks** to view the list of nearby Wi-Fi networks.




Note: If you are connected via Ethernet make sure the supported ethernet connectivity type in most case they are DHCP (Dynamic Host Configuration Protocol) i.e. automatically assigned IP address to your host machine.

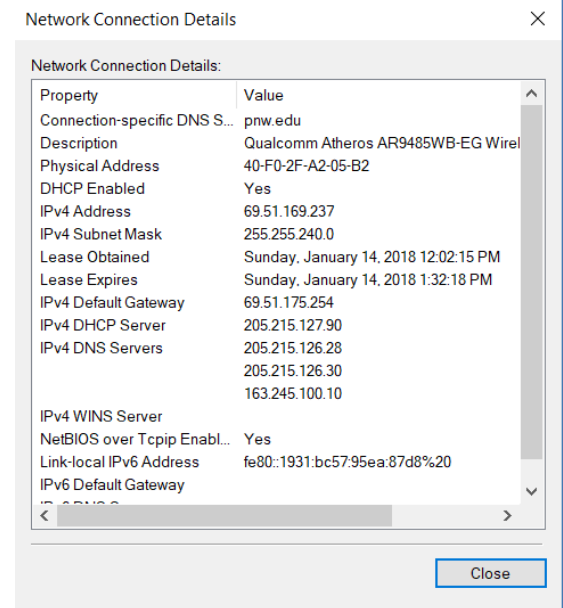
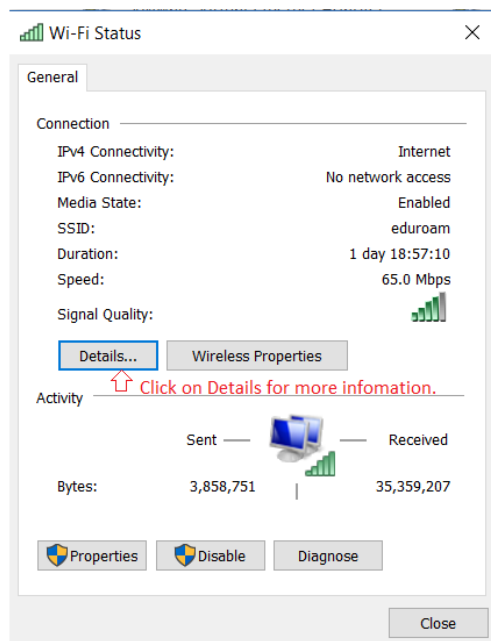
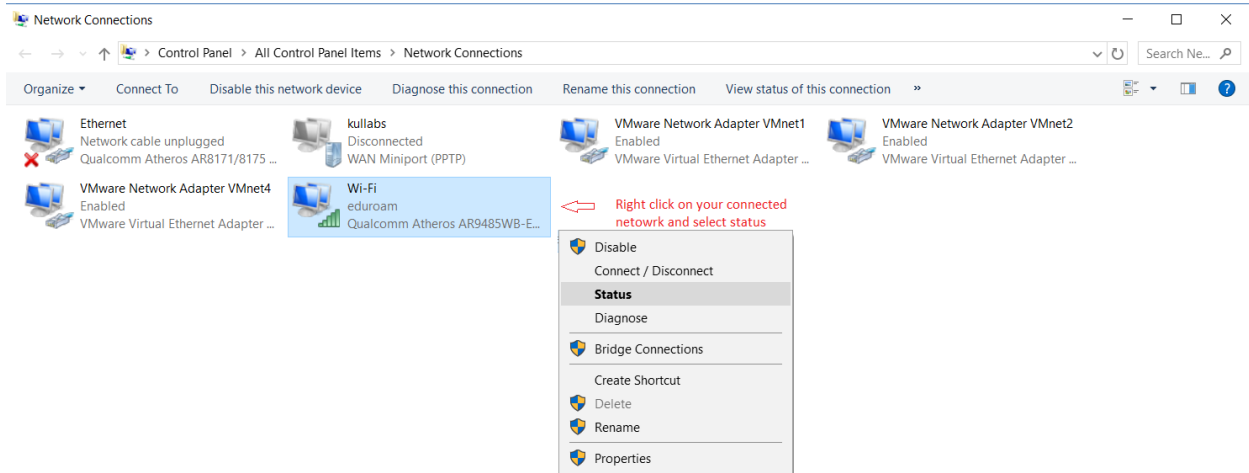
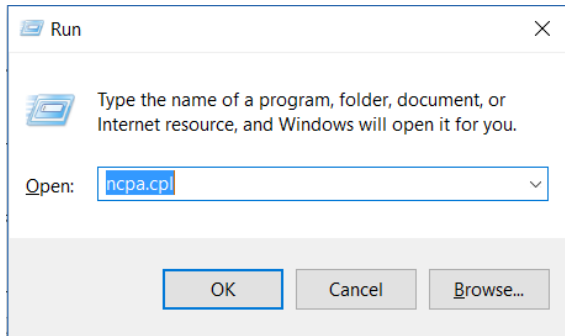
Once you are connected to the network i.e. in our case we are connected to a university eduroam wireless network (your school wireless network should be different). We can click on the connected network to view the detail of our network Connectivity.



Properties	
SSID:	eduroam ← Connected network
Protocol:	802.11n
Security type:	WPA2-Enterprise
Type of sign-in info:	Microsoft: Protected EAP (PEAP)
Network band:	2.4 GHz
Network channel:	1
IPv4 address:	69.51.169.237 ← Assigned IP address
IPv4 DNS Servers:	205.215.126.28 205.215.126.30 163.245.100.10
Primary DNS suffix:	pnw.edu

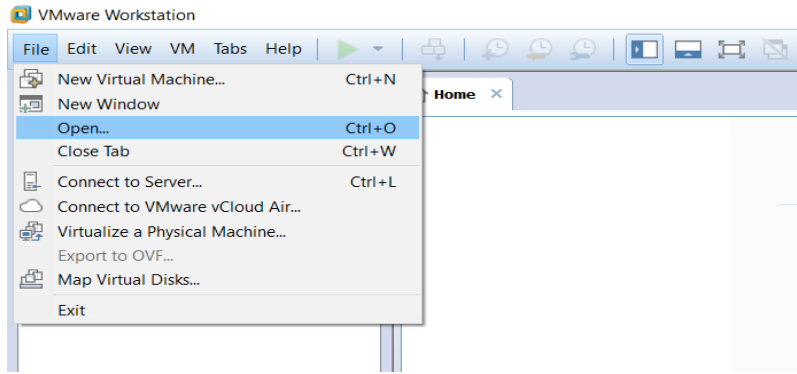
Note: For more detail information open your network connection settings window. Press Windows key +

R    *to open Run prompt and type ncpa.cpl and hit enter shortcut to access you network setting on windows environment.*



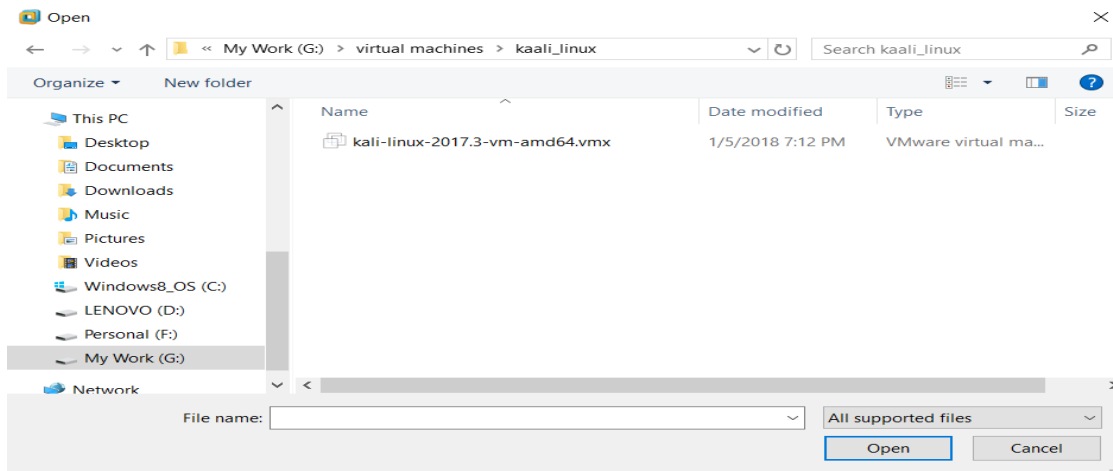
Step 3:

Click on File Menu and select Open to select your Virtual Machine on your VMware Workstation.



Step 4:

Select your virtual machine from your student folder or from your local machine click open to load the virtual machine on your VMware workstation.



Step 5:

Select your virtual machine from your left menu bar. We can now run the virtual machine in our VMware workstation and make changes to the virtual machine configuration.

